

MR-24[®] Conventional Roof System

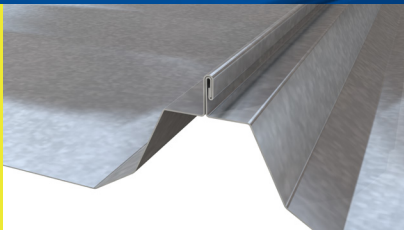
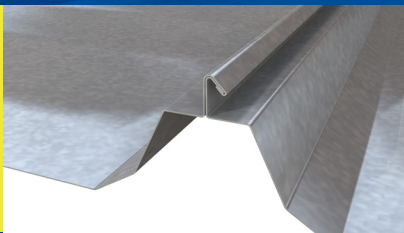
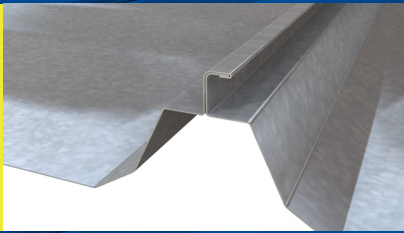
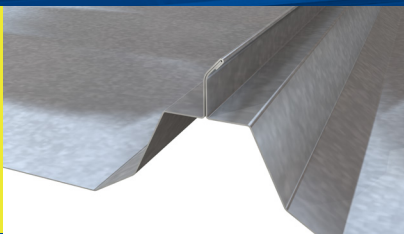
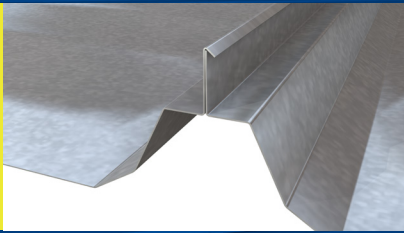
Superior Protection and Efficiency

The industry's #1 standing-seam metal roof system with added energy efficiency for your conventional building or reroof project.





See The MR-24 Difference



The Pittsburgh
double-lock seam
creates a weathertight
roof surface.

The MR - 24[®] Conventional Roof System Engineered for Performance

Proven to Deliver Superior Protection and Efficiency

Precision Engineering

Assures the Highest Quality Installation

The MR-24 Conventional Roof System features factory-punched structural members and roof panels to insure a precisely aligned roof system. Precise alignment adds durability to the roof system and enables it to respond easily to daily and seasonal temperature changes.

The Pittsburgh Double-lock Seam

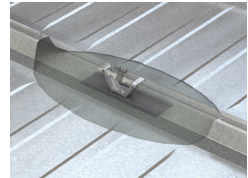
Creates a True Monolithic Weathertight Surface

The MR-24 Conventional Roof System uses the Pittsburgh double-lock seam with the final 180-degrees completed in the field with a portable seaming machine. More than 3 billion square-feet of the MR-24 roof system has been installed since 1969 and life cycles of over 50 years have been achieved.

Roof Clips Designed to Move

Allows for Expansion and Contraction

The MR-24 Conventional Roof System clip allows the roof to expand and contract with changing temperatures. This movement prevents stress at the clips, fasteners, and splices that could otherwise make the roof vulnerable to leaks and wind damage.



Energy Efficient

High R-Value Options are Available

Roof insulation options up to R-35 are available with the MR-24 Conventional Roof System using polyisocyanurate insulation. The superior quality rigid board insulation is available in a variety of thickness and insulation values.



Sustainable “Green” Design

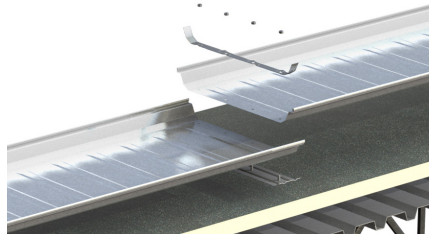
Contributes to Environmental Responsibility

The steel in the MR-24 Conventional Roof System is a material-efficient, recyclable, low-maintenance, sustainable, and long-life roof solution. Green attributes of the system may also earn credits for LEED® certification. It's available in a variety of highly solar-reflective ‘cool roof’ color finishes.

Staggered Panel Splices

Adds Further Leak Protection

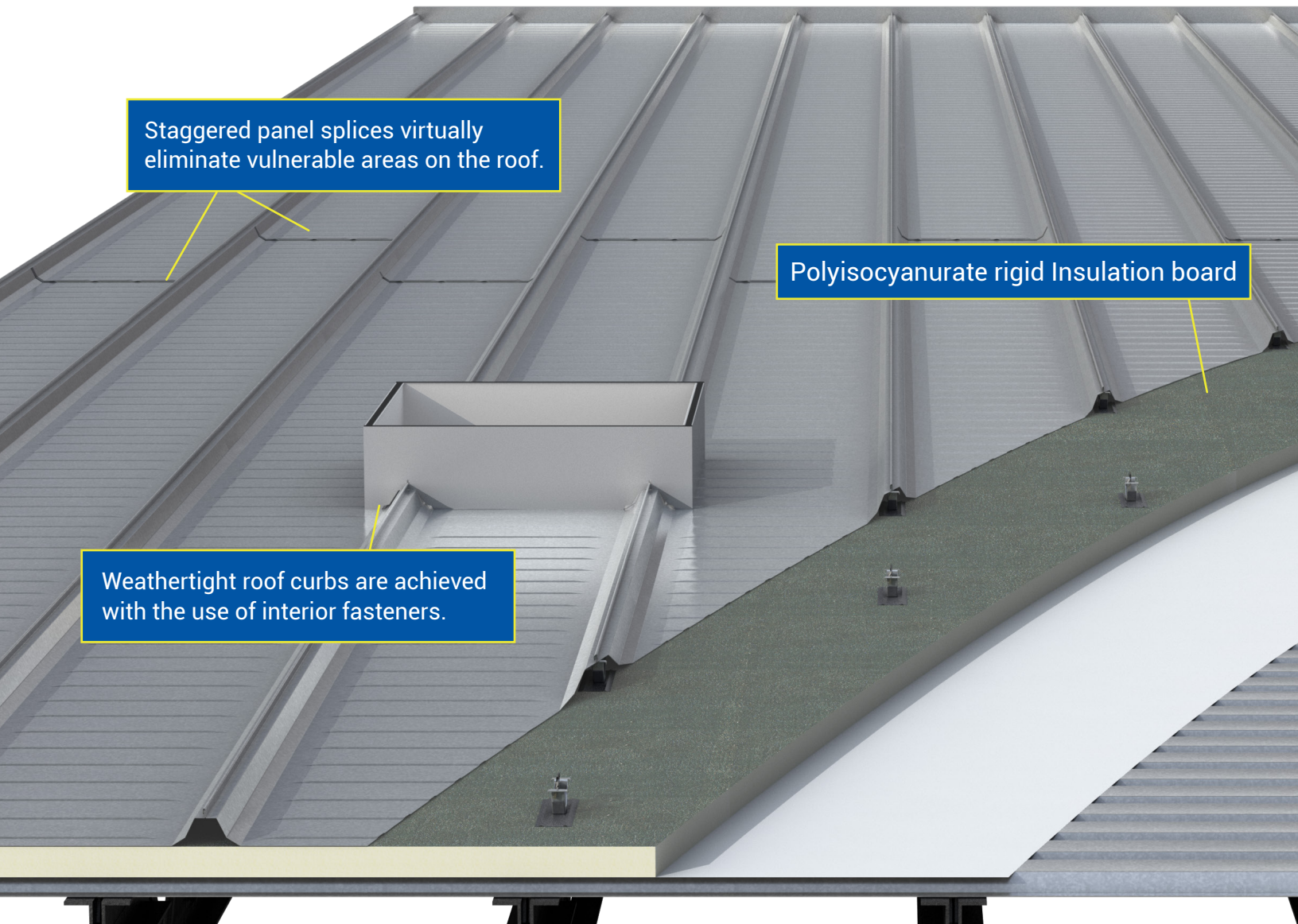
The MR-24 Conventional Roof System staggers adjacent panel splices, eliminating the challenge of sealing panels where the four metal corners meet. Offsetting the adjacent panel splices creates a superior lap detail and virtually eliminates leaks.



Wind Uplift Resistance

Adds Protection and Peace of Mind

The MR-24 Conventional Roof System has been tested in accordance with ASTM E1592 to provide for wind uplift resistance to meet local code requirements. Decreasing clip spacing allows for increased wind resistance in high wind areas with minimal impact to cost.



Staggered panel splices virtually eliminate vulnerable areas on the roof.

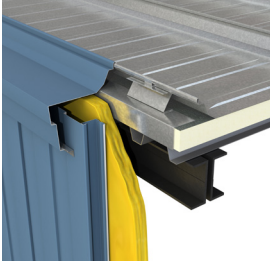
Polyisocyanurate rigid Insulation board

Weathertight roof curbs are achieved with the use of interior fasteners.

Seamed-in Gable Trim

Designed for Thermal Expansion and Contraction

Like virtually every other aspect of the MR-24 Conventional Roof System, the gable trim is also designed to expand and contract with daily and seasonal temperature changes. Integrated gable trim is an integral part of the roof system and improves performance and durability.



Weathertight Roof Curbs

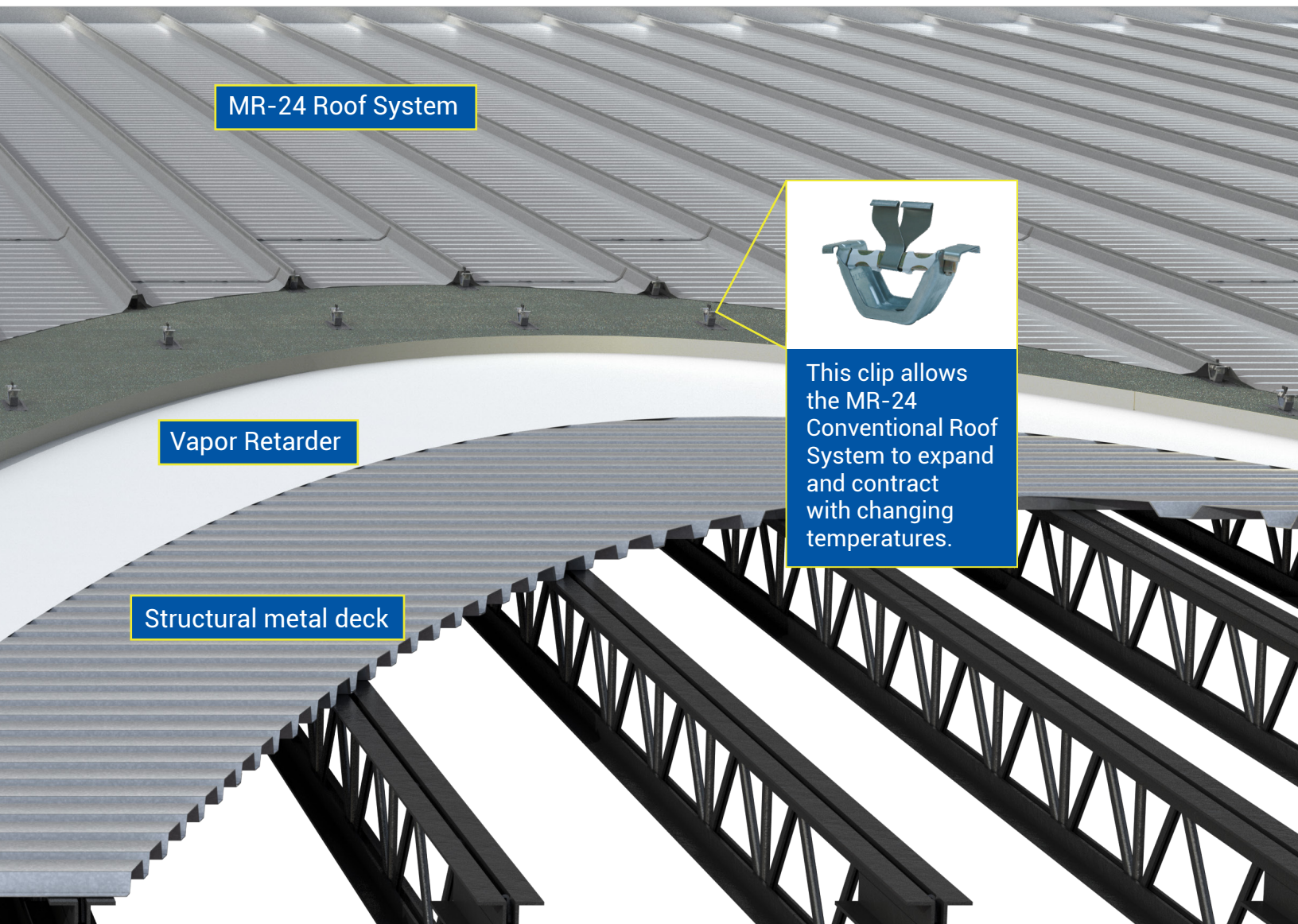
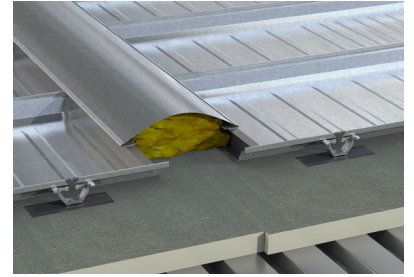
Eliminates Potential Problem Areas

The all-aluminum internal flange curb system features fasteners that are positioned on the interior flange of the roof curbs to eliminate another potential area for water to infiltrate.

Flexible Ridge Design

Performance in Every Detail

The MR-24 Conventional Roof System Ridge is designed to allow for expansion and contraction. Our proven ridge design 'caps off' the roof system – the best-performing roof system available.



MR-24 Roof System

Vapor Retarder

Structural metal deck



This clip allows the MR-24 Conventional Roof System to expand and contract with changing temperatures.



Additional Features of the MR-24® Conventional Roof System

Two to three times the service life vs TPO

The MR-24 Conventional Roof System features Galvalume® that has an anticipated service life of 60 years according to a white paper published by the Metal Construction Association (MCA).

Rigid Insulation Board*

A variety of metal building boards, some with embossed aluminum facing on both sides, is available and enables the MR-24 Conventional Roof System to deliver exceptional R-value.

Bearing Plate

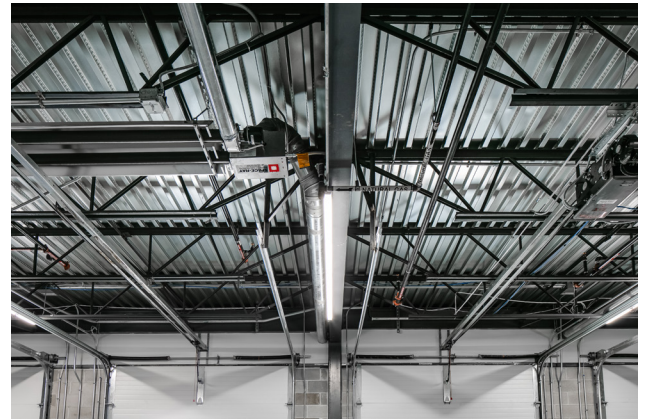
The bearing plate insures insulation is not damaged during the panel clip installation.

Vapor Retarder

A vapor retarder controls condensation within the roof system and helps to keep the insulation material joints dry. While Butler always recommends a vapor retarder, please enlist a mechanical engineer to verify your insulation and ventilation needs.

Warranty Protection

The MR-24 Conventional Roof System is available with a 25-year warranty for panel finish protection and weathertightness. With reasonable care and maintenance, it is your worry-free roof solution for 25 years and beyond.



*The acoustic characteristics of rigid foam board insulation may not be suitable for certain buildings. See your Butler Builder® for more information.

Butler Offers You More

Maximize your building's performance with a complete Butler® system solution

- Innovative structural, wall and roof systems
- Precision-engineered for seamless integration

Butler Builders provide complete construction services with single-source responsibility

- Reputable professionals with extensive knowledge of local building codes



Galvalume is a registered trademark of BIEC International Inc. Kynar 500® is a registered trademark of Solvay Solexis. Thermax™ is a trademark of The Dow Chemical Company. ("DOW") or an affiliated company of DOW. LEED is a trademark of the U.S. Green Building Council. The USGBC logo is a registered trademark owned by the U.S. Green Building Council and is used by permission.

©2021 BlueScope Buildings North America, Inc. All rights reserved. Butler Manufacturing® is a division of BlueScope Buildings North America, Inc. Find your independent Butler Builder® at www.butlermfg.com.

Form No. 6586 7/21